

Neha Engineering

Works &Office:

133, 134, 135, Plot No. 23, 24,
Ganga Mai Industrial Estate, MIDC,
Satpur, Nashik – 422 007,
Maharashtra, India.

Contact No.:

LL:0253-6649330

Cell: 9423479200,9890625409,8446800500

Email: nehaengg.deelip@rediffmail.com

Sr. No.	Description	Page. No.
1.	Front Page	02
2.	Index	01
3.	Company Profile	03
4.	Quality Policy	05
5.	Customer Satisfaction Index	06
6.	We are in supply-chain of	07
7.	Samples of our skills	08
8.	List of Machine	10A
9.	Machines Details	10-32
10.	Machine Comparison Chart	33

Company Profile

Core Values:

- Continual Improvement and Continual growth.
- Employees are most important pillar of Neha.
- Provide a great work environment and treat each other with respect and dignity.
- Make each customer habitual of our parts and services with help of highest degree of flexibility.
- Contribute prosperity and positivity to our employee and communities.
- Believe on doing things religiously.

Vision

- To become most admirable and respected organization in the field of precision part manufacturing with the help of continuous growth and ethical work culture.

Mission

- To be and remain the customer's first choice.
- Adapt advance and latest technology.
- Cultivate lean and flexible manufacturing culture.
- Delight our customers with continual improvement in Quality, cost and service.

Neha Engineering

The company has started in 2005 manufacturing small precision components. With new concept and development, we renewed in 2015, from conventional lathe to CNC, VMC machines for Customer's precision part demand. Increased customer demands, for advanced and complex machining requirement, forced us to introduce state of arts CNCs, and VMCs machines.

More than, 12 years of experience in industry, we are skillfully engaged in manufacturing, and developing new customer platform of customer made precision components, that includes Valve parts, Printing Machine Offset parts, Jig and Fixture parts, Aircraft parts, Engine parts, SPM m/c parts. For our parts we are developing our infrastructure towards world class requirement and facilities, to meet the demand of clients on time.

Our 12 years of involvement in precision parts in above verticals, has enabled us to become a demanding name in this business. With so many years of experience, we have attained an in depth understanding of advance manufacturing processes and practices. Our modern production measures, enables us to make PRECISION parts at a large scale and helped us in reduced unit cost and pass the same to our customers.

Product

We manufacture a wide range of maximum 400 Kg and maximum Dia = 600 mm, and small up to Dia = 2 mm, precision components and assemblies like, Valve parts, Machine Parts, Carbide Parts, etc. We are one of the leading suppliers of miniature & complex all industrial machining parts for examples Steel, Nonferrous, Nylon& Aluminum etc.

Competency :

- ISO 9001: 2015 certified company.
- Have excellent infrastructural facility.
- Total space available is 4,000 Sq.ft.
- Also we take a new plant which is 6000 Sq. ft.
- Young and well experienced staff.
- 33 Machine setup, including --- Lathes, Cylindrical grinders, D.R.O. Millings, VMCs, CNCs, EDMs, Wire Cuts, Welding machines helping in fast delivery and services.
- Latest Inspection Facility including digital readout.
- High-tech inspection available in adequate numbers for receiving, in-process and final inspection stages.
- Part designing & manufacturing carried out in house.
- In-house tool manufacturing & grinding facility available.
- Lot of secondary machines are available to support core operations.

QUALITY POLICY

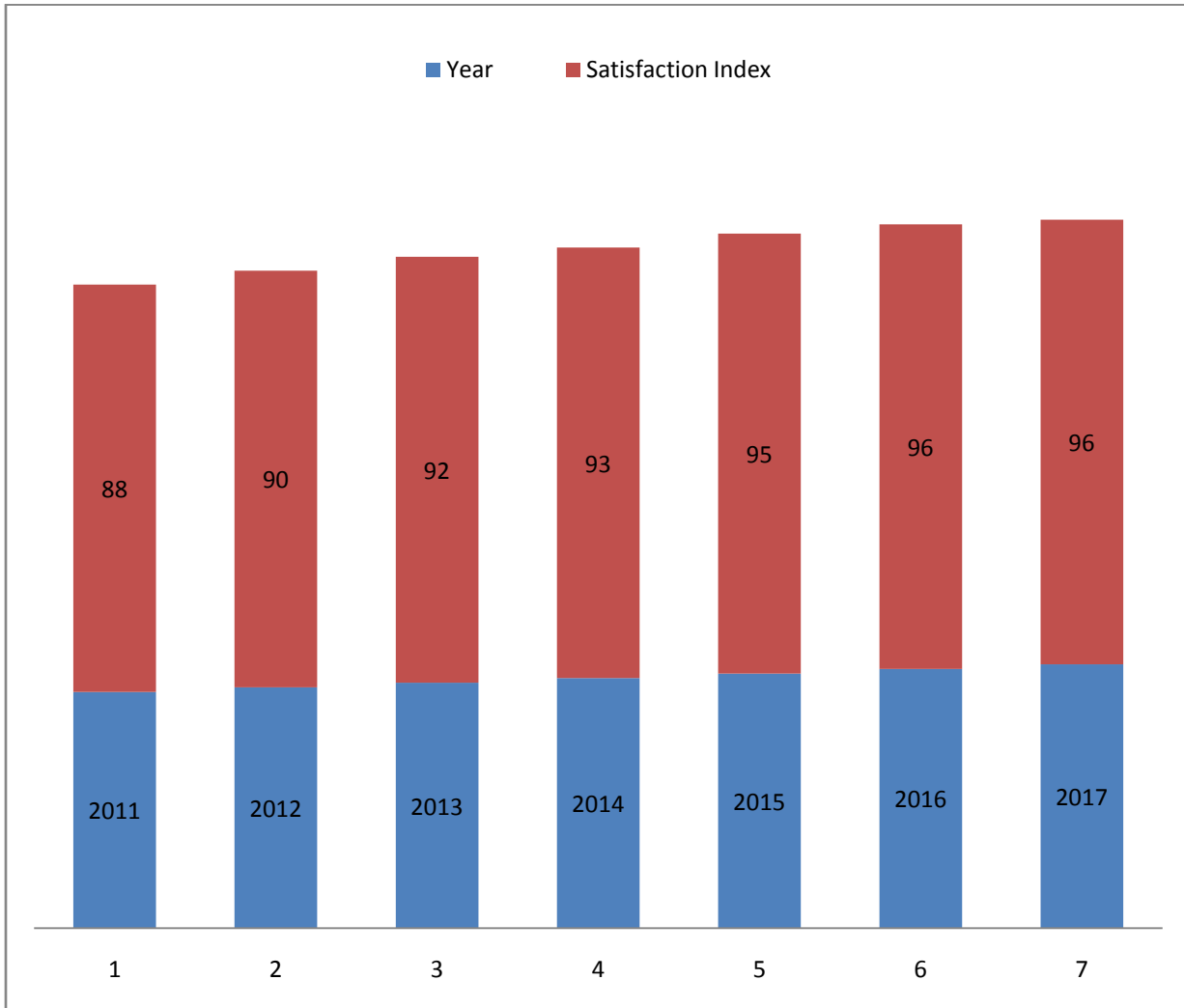
We, at NEHA ENGINEERING are committed to, **Manufacturing of precision machined components**, and, achieve customer satisfaction by meeting their needs of specifications, on time delivery, at optimum cost.

We shall achieve this, through a process of, **continual improvement** in all areas of operations, giving emphasis on Technology up-gradation, Training and reducing process cost by establishing quality management system.

Date:
01/10/2011

Deelip Savkare
(CEO)

Customer Satisfaction Index



We are in supply-chain of:

KOSO

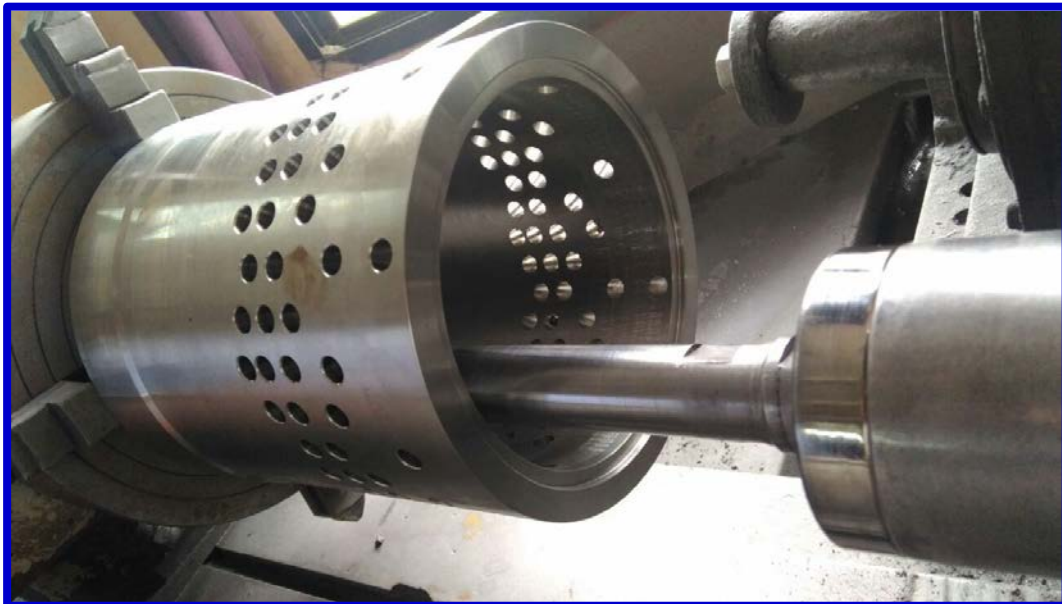


Swift Private Ltd.

Synergetic Automation Pvt.Ltd.

Samples of our skills:





Machine: Cylindrical Grinding Machine (M-01):



Technical Specifications:

M/c Identification	M-01	Unit
Make	Teksol	---
Model	2010	---
Center height	200 (8")	mm (inch)
Between centre	1	Meter
Job weight capacity	200	Kg
Accuracy	20	micron
M/c Weight	3	Ton
Job ID & L	ID = 6 - 250	mm
	L = 300	mm
Job OD ID & L (Big Dia.)	ID = 5 - 300	mm
	L = 250	mm

Information Verified by (CEO): DilipSavkare on date 01-April-2015

Machine: Cylindrical Grinding Machine (M-02):**Technical Specifications:**

M/c Identification	M-02	Unit
Make	HiyLaef	---
Model	1998	---
Center height	150 (6")	mm (inch)
Between centre	1	Meter
Job weight capacity	200	Kg
Accuracy	10	micron
M/c Weight	4	Ton
Job ID & L	6 - 200	mm
	L = 300	mm
Job OD ID & L (Big Dia.)	3 - 250,	mm
	L = 200	mm

Information Verified by (CEO): DilipSavkare on date 01-April-2015

Machine: Cylindrical Grinding Machine (M-20):**Technical Specifications:**

M/c Identification	M-20	Unit
Make	Hiy Leaf	---
Model	2012	---
Center height	150 (6")	mm (inch)
Between centre	1	Meter
Job weight capacity	200	Kg
Accuracy	10	micron
M/c Weight	4	Ton
Job ID & L	6 - 200	mm
	L = 300	mm
Job OD ID & L (Big Dia.)	3 - 250,	mm
	L = 200	mm

Information Verified by (CEO): DilipSavkare on date 01-April-2015

Machine: DRO Milling Machine (M-09):**Technical Specifications:**

M/c Identification	M-09	Unit
Make	ARGO (Taiwan Make)	---
Model	2008	---
DRO	Electronica make	---
Job Height	400	mm
Job Length	1000	mm
Job Width	500	mm
Least Count	1	micron
Possible Accuracy of the job	10	micron
Boring Technology	Auto Feed	---
Job Weight capacity	300	Kg

Information Verified by (CEO): DilipSavkare on date 01-April-2015

Machine: DRO Milling Machine (M-10):**Technical Specifications:**

M/c Identification	M-10	Unit
Make	ARGO (Taiwan Make)	---
Model	2010	---
DRO	Electronica make	---
Job Height	350	mm
Job Length	850	mm
Job Width	450	mm
Least Count	1	micron
Possible Accuracy of the job	10	micron
Boring Technology	Auto Feed	---
Job Weight capacity	250	Kg

Information Verified by (CEO): DilipSavkare on date 01-April-2015

Machine: DRO Milling Machine (M-21):**Technical Specifications:**

M/c Identification	M-21	Unit
Make	ARGO (Taiwan Make)	---
Model	2013	---
DRO	Electronica make	---
Job Height	400	mm
Job Length	1000	mm
Job Width	500	mm
Least Count	1	micron
Possible Accuracy of the job	10	micron
Boring Technology	Auto Feed	---
Job Weight capacity	300	Kg

Information Verified by (CEO): DilipSavkare on date 01-April-2015

Machine: DRO Milling Machine (M-23):**Technical Specifications:**

M/c Identification	M-23	Unit
Make	ARGO (Taiwan Make)	---
Model	2015	---
DRO	Electronica make	---
Job Height	400	mm
Job Length	1000	mm
Job Width	500	mm
Least Count	1	micron
Possible Accuracy of the job	10	micron
Boring Technology	Auto Feed	---
Job Weight capacity	300	Kg
Information Verified by (CEO): DilipSavkare on date 01-April-2015		

Machine: Lathe Machine (M-04):**Technical Specifications:**

M/c Identification	M-04	Unit
Total Qty.	01 Nos	---
Capability	Heavy duty	
Make	Silver	---
Model	2010	---
Total Length	4.5	Feet
Centre Height	08	Inch
Between Center	600	Mm
Job weight capacity	300	Kg
Accuracy	0.020	mm
Threading	All Type	
Spindle ID	52	mm
M/c weight	1.5	Tone

Information Verified by (CEO): DilipSavkare on date 01-April-2015

Machine: Lathe Machine (M-05):**Technical Specifications:**

M/c Identification	M-05	Unit
Total Qty.	01 No	---
Capability	Medium duty	
Make	Amba	---
Model	2013	---
Total Length	4.5	Feet
Centre Height	08	Inch
Between Center	600	Mm
Job weight capacity	150	Kg
Accuracy	0.020	mm
Threading	All Type	
Spindle ID	42	mm
M/c weight	1.0	Tone

Information Verified by (CEO): DilipSavkare on date 01-April-2015

Machine: Lathe Machine (M-06):**Technical Specifications:**

M/c Identification	M-06	Unit
Total Qty.	01 No	---
Capability	Heavy duty Manual	---
Make	Vidya	---
Model	2013	---
Total Length	6.5	Feet
Centre Height	12	Inch
Between Center	1000	Mm
Job weight capacity	300	Kg
Accuracy	0.02	mm
Threading	All Type	---
Spindle ID	60	mm
M/c weight	2	Tone

Information Verified by (CEO): DilipSavkare on date 01-April-2015

Machine: Lathe Machine (M-16):**Technical Specifications:**

M/c Identification	M-16	Unit
Total Qty.	01 No	---
Make	Mihir	---
Capability	Medium duty Manual	---
Model	2014	---
Total Length	6.5	Feet
Centre Height	08	Inch
Between Center	600	Mm
Job weight capacity	150	Kg
Accuracy	0.020	mm
Threading	All Type	
Spindle ID	45	mm
M/c weight	1.5	Tone

Information Verified by (CEO): DilipSavkare on date 01-April-2015

Machine: Lathe Machine (M-17):**Technical Specifications:**

M/c Identification	M-17	Unit
Total Qty.	01 No	---
Capability	Heavy duty Manual	---
Make	England	---
Model	2008	---
Total Length	6.5	Feet
Centre Height	07	Inch
Between Center	1000	Mm
Job weight capacity	300	Kg
Accuracy	0.020	mm
Threading	All Type	---
Spindle ID	50	mm
M/c weight	2.5	Tone

Information Verified by (CEO): DilipSavkare on date 01-April-2015

Machine: Lathe Machine (M-18):**Technical Specifications:**

M/c Identification	M-18	Unit
Total Qty.	01 No	---
Capability	Medium duty Manual	---
Make	HMT	---
Model	2010	---
Total Length	--	Feet
Centre Height	12	Inch
Between Center	1000	Mm
Job weight capacity	500	Kg
Accuracy	0.020	mm
Threading	All Type	
Spindle ID	65	mm
M/c weight	5	Tone

Information Verified by (CEO): DilipSavkare on date 01-April-2015

Machine: Lathe Machine (M-19):**Technical Specifications:**

M/c Identification	M-19	Unit
Total Qty.	01 No	---
Capability	Heavy duty Manual	---
Make	HMT NH-26	---
Model	2009	---
Total Length	1.5	Feet
Centre Height	14	Inch
Between Center	1000	Mm
Job weight capacity	500	Kg
Accuracy	0.010	mm
Threading	All Type	
Spindle ID	65	mm
M/c weight	5.5	Tone

Information Verified by (CEO): DilipSavkare on date 01-April-2015

Machine: EDM Machine (M-27):**Technical Specifications:**

M/c Identification	M-27	Unit
Work tank internal dimensions (W x D x H)	700 x 400 x 250mm	mm
Work table dimensions	400 x 250 mm	mm
Traverse (X,Y,Z)	300, 200, 250 mm	mm
Maximum job weight	300 kg	kg
Maximum electrode weight	50 kg	kg
Maximum job height above the table	250mm	mm
Feed motor / Servo system for Z axis	DC Servo	---
Position measuring system (X,Y,Z)	Incremental linear scale	---
Dielectric system	Integral with the machine tool	---
Dielectric capacity	400 Litres	---
Filter element	10 μ paper cartridge 2 nos.	---

Information Verified by (CEO): DilipSavkare on date 01-April-2015

Machine: EDM Machine (M-28):**Technical Specifications:**

M/c Identification	M-28	Unit
Work tank internal dimensions (W x D x H)	800 x 500 x 350 mm	mm
Work table dimensions	500 x 350 mm	mm
Traverse (X,Y,Z)	300, 200, 250 mm	mm
Maximum job weight	300 kg	kg
Maximum electrode weight	50 kg	kg
Maximum job height above the table	250mm	mm
Feed motor / Servo system for Z axis	DC Servo	----
Position measuring system (X,Y,Z)	Incremental linear scale	----
Dielectric system	Integral with the machine tool	----
Dielectric capacity	400 Litres	----
Filter element	10 μ paper cartridge 2 nos.	----

Information Verified by (CEO): DilipSavkare on date 01-April-2015

Machine: EDM Machine (M-29):**Technical Specifications:**

M/c Identification	M-29	Unit
Work tank internal dimensions (W x D x H)	800 x 500 x 300mm	mm
Work table dimensions	550 x 300 mm	mm
Traverse (X,Y,Z)	300, 200, 250 mm	mm
Maximum job weight	300 kg	kg
Maximum electrode weight	100 kg	kg
Maximum job height above the table	250 mm	m
Feed motor / Servo system for Z axis	DC Servo	---
Position measuring system (X,Y,Z)	Incremental linear scale	---
Dielectric system	Integral with the machine tool	---
Dielectric capacity	400 Litres	---
Filter element	10 μ paper cartridge 2 nos.	---

Information Verified by (CEO): DilipSavkare on date 01-April-2015

Machine: Drill Machine (M-13):**Technical Specifications:**

M/c Identification	M-13	Unit
Make	S.S.V.E	---
Model	KMP (Anchal)	---
Center height	600	mm
RPM	1440	RPM
Capacity	19	mm
Accuracy	0.050	micron
M/c Weight	350	Kg

Information Verified by (CEO): DilipSavkare on date 01-April-2015

Machine: CNC VX-200 Super (M-26):**Technical Specifications:**

M/c Identification	M-26	Specification
Capacity	Swing over bed Standard turning diameter Maximum turning diameter Dist. Between center Max. turning length	Φ 400mm Φ 200mm Φ 300mm 600mm 550mm
Slides	Cross (X axis) travel Longitudinal (Z axis) Travel Rapid Feed (X & Z axis)	160mm 550mm 24m/min
Ball Screw	Z axis Motor Torque (Z axis) Xaxis Motor Torque (X axis)	Φ 32 X 10P 7 NM Φ 32 X 10P 7 NM
Main Spindle	Spindle Motor Spindle Bore Spindle Nose Max. Bar Capacity	7.5/11KV (15min. Rating) Φ 63mm A ₂ 6 Φ 51mm*

	Chuck Size Speed Range Full Power Range	Φ 200mm 50-3500rpm 1000-3000rpm
Turret	No. of Stations Tool Size Max. Boring Bar Capacity	8 25X25mm Φ 40mm
Other Data	Weight (Approx) Machine Dimension (LXBXH)	3300 Kg 2750X1600X1750mm
Accuracy	Positioning accuracy Repeatability	0.005 0.003
Tail Stock	Quill Diameter Quill Stroke	Φ 80mm 100mm
	Control System	Fanuc Oi Mate TD

Machine: VMC SUPERMAX TAIWAN (M-25):**Technical Specifications:**

M/c Identification	M-25	Unit
Make	Supermax Taiwan	---
Model	YCMV85A	---
YOM	2004	---
CONTROLLER	FANUC 18 M	---
TRAVELS	---	---
X- Axis	860	Mm
Y- Axis	440	Mm
Z- Axis	630	Mm
TABLE SIZE	950X400	Mm
ATC	20 U Type	--
SPINDLE SPEED	8000	RPM
SPINDLE TAPER	BT-40	

VMC NO:- 02

Technical Specifications:		
M/c Identification	M-26	Unit
Make	OKK	---
Model	PCV50/60	---
YOM	2004	---
CONTROLLER	FANUC 18 M	---
TRAVELS	---	---
X- Axis	600	Mm
Y- Axis	550	Mm
Z- Axis	550	Mm
TABLE SIZE	950X500	Mm
ATC	24 U Type	--
SPINDLE SPEED	32000	RPM
SPINDLE TAPER	BT-40	

1) Cylindrical Grinder:

M/c Identification	M-01	M-02	M-20	Unit
Make	Teksol	HiyLaef	Hiy Leaf	---
Model	2010	1998	2012	---
Center height	200 (8")	150 (6")	150 (6")	mm (inch)
Between centre	1	1	1	Meter
Job weight capacity	200	200	200	Kg
Accuracy	20	10	10	micron
M/c Weight	3	4	4	Ton
Job ID	6 - 250	6 - 200	6 - 200	mm
	L = 300	L = 300	L = 300	mm
Job OD (Big Dia.)	5 - 300,	3 - 250,	3 - 250,	mm
	L = 250	L = 200	L = 200	mm

2) DRO:

M/c Identification	M-09	M-10	M-21	M-23	Unit
Make	ARGO (Taiwan Make)	ARGO (Taiwan Make)	ARGO (Taiwan Make)	ARGO (Taiwan Make)	---
Model	2008	2010	2013	2015	---
DRO	Electronica make	Electronica make	Electronica make	Electronica make	---
Job Height	400	350	400	400	mm
Job Length	1000	850	1000	1000	mm
Job Width	500	450	500	500	mm
Least Count	1	1	1	1	micron
Possible Accuracy of the job	10	10	10	10	micron
Boring Technology	Auto Feed	Auto Feed	Auto Feed	Auto Feed	---
Job Weight capacity	300	250	300	300	Kg

3) Lathe Machines:

M/c Identification	M-06, M-08, M-13, M-14	M-04,	M-05	1	M-18	M-19	M-24	Unit
Total Qty.	04 Nos	01 Nos	01 Nos	2	01 No	01 No	---	---
Capability	Heavy duty Manual	Heavy duty	Medium Duty	3				
Make	Vidya, Kiran	Silver		4	HMT	HMT NH-26	Russian Make	---
Model	20XX	2010		5	2010	2009	2005	---
Total Length	6.5	4.5	4.5	6	--	1.5	6.5	Feet
Centre Height	12	08	08	7	12	14	12	Inch
Between Center	1000	600	600	8	1000	1000	600	Mm
Job weight capacity	300	300	150	9	500	500	750	Kg
Accuracy	0.05	0.020	0.020	10	0.020	0.010	0.1	mm
Threading	All Type	All Type	All Type	11	All Type	All Type	--	
Spindle ID	60	52	42	12	65	65	76	mm
M/c weight	3	1.5	1.5	13	5	5.5	6	Tone

'4) EDM Machines (Sparkrogen):

M/c Identification	M-27	M-28	M-29	Unit				
Total Qty.	01 No	01 No	01 No	---				
Make	Electronica	Ratnaparkhi	Ratnaparkhi	---				
Model	ZNC	3550	3550	---				
Table Size	400 X 600	300X450	300X450	mm				
Weight capacity	300	200	200	Kg				
	Refer Catalogues	Bring Catalogue						

End of Document